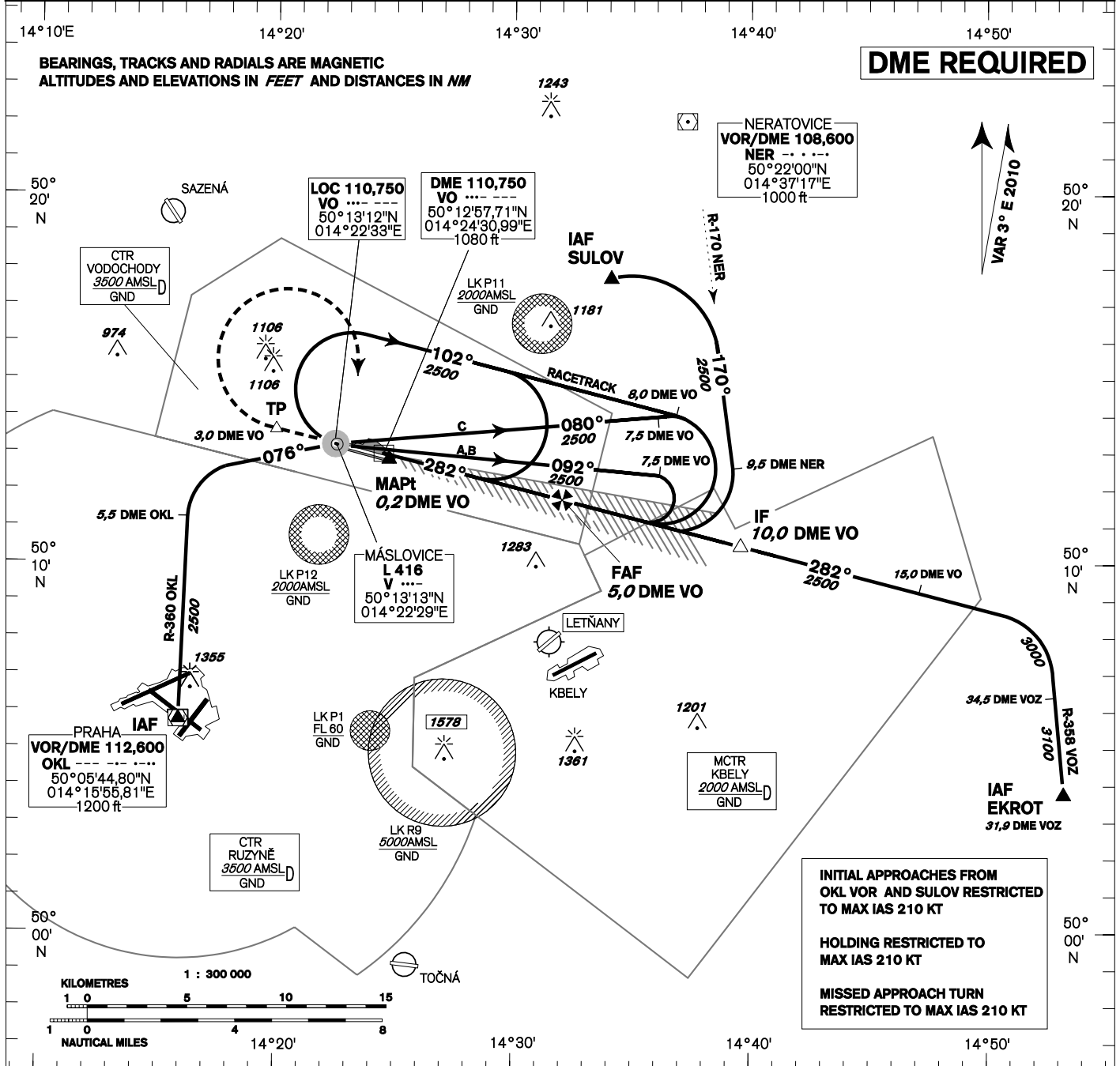


INSTRUMENT APPROACH CHART - ICAO	AERODROME ELEV 919 - 33 hPa THR RWY 28 ELEV 915 - 33 hPa OCH RELATED TO THR RWY 28	VODOCHODY RADAR 127,475 TOWER 133,075	MSA L V 	VODOCHODY ILS RWY 28 (ACFT CAT A,B,C)
---	--	---	-------------	--

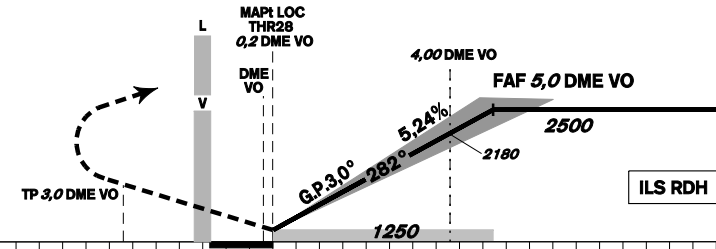


INITIAL APPROACHES FROM OKL VOR AND SULOV RESTRICTED TO MAX IAS 210 KT

HOLDING RESTRICTED TO MAX IAS 210 KT

MISSED APPROACH TURN RESTRICTED TO MAX IAS 210 KT

MISSED APPROACH:
Climb to 2500, at 3,0 DME VO turn right to L V



THR 501249,66N 0142444,89E
ELEV 915 - 33 hPa
NM FM THR28

DME VO NM	5	4	3	2	1
DIST THR NM	4,8	3,8	2,8	1,8	0,8
ALTITUDES ft	2500	2180	1880	1540	1230

OCA/OCH		A	B	C
Straight - in Approach	ft	1132/217	1142/227	1152/237
	m	345/66	348/69	351/72
LOC	ft	1250/335		
	m	381/103		
Circling	ft	1313 R / -	1411 R / -	1510 R / -
	m	400 R / -	430 R / -	460 R / -

FAF - MAPt 4,8 NM	min:sec	3:07	2:30	2:05	1:47	1:34	1:23
	Rate of descent 5,24%	ft/min	420	530	640	740	850

Timing is not authorized for defining the MAPt.

